



GMT MONTHLY MEMBERSHIP PROGRESS REPORT

Results as of: 5/31/2019

Multiple District 14

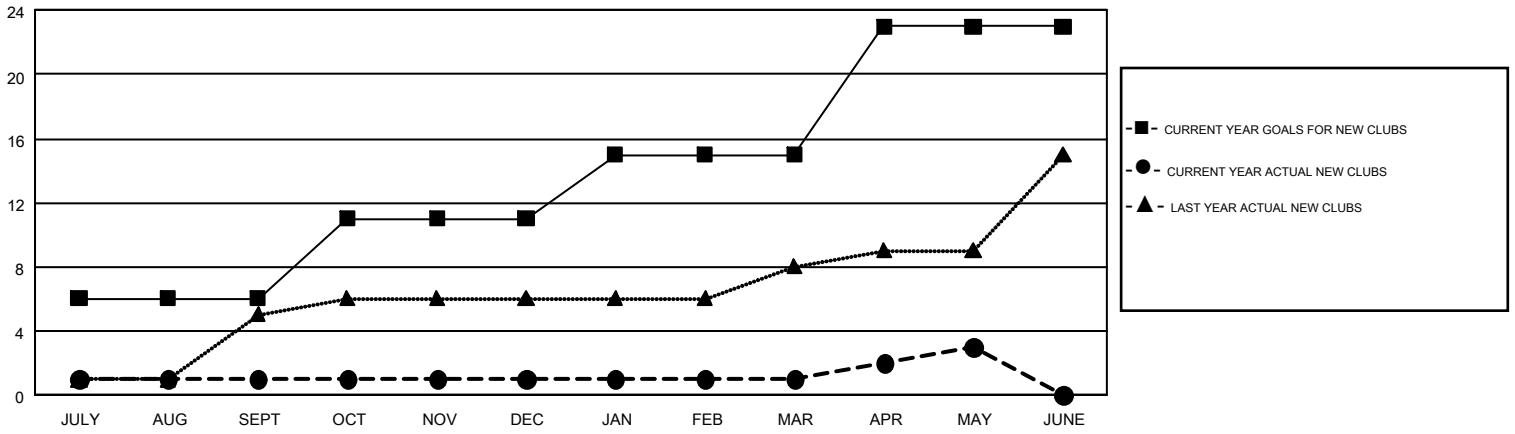
LOCATION: PENNSYLVANIA

GMT: CINDY GREGG

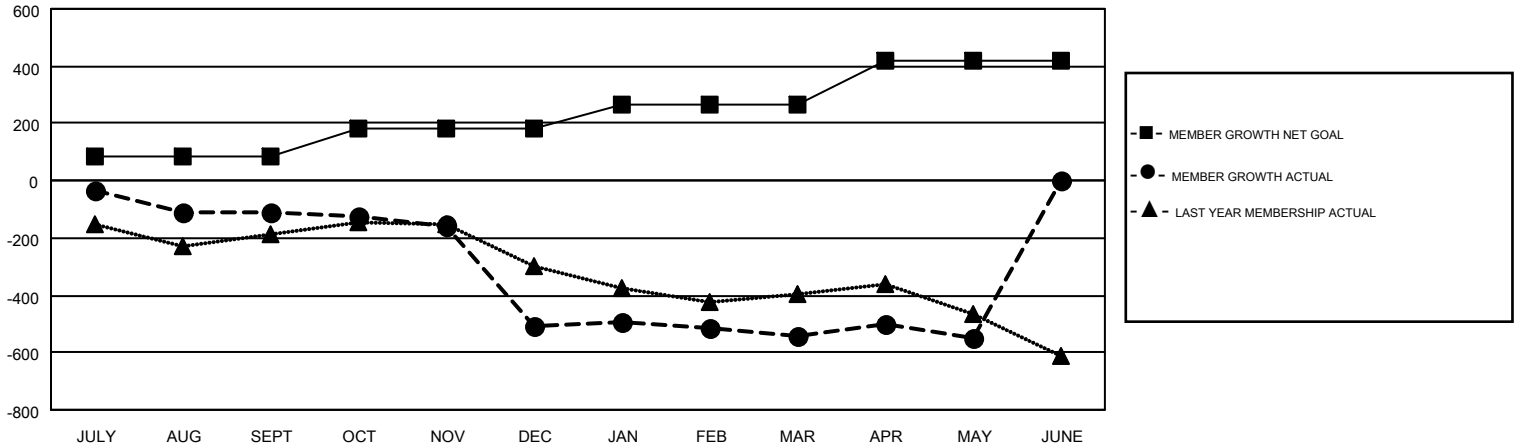
GMT CA 1

Clubs				Members			
RESULTS FOR 2018-2019				RESULTS FOR 2018-2019			
QUARTER	NEW CLUB GOAL	NEW CLUBS	DROPPED CLUBS	QUARTER	MEMBER GROWTH NET GOAL	MEMBER GROWTH ACTUAL	DROPPED MEMBERS ACTUAL (including transfers)
JULY/AUG/SEPT	6	1	8	JULY/AUG/SEPT	84	285	360
OCT/NOV/DEC	5	0	6	OCT/NOV/DEC	100	343	706
JAN/FEB/MAR	4	0	6	JAN/FEB/MAR	82	370	353
APR/MAY/JUNE	8	2	0	APR/MAY/JUNE	151	307	290

GOALS AND ACTUAL NEW CLUBS CUMULATIVE



GOALS AND ACTUAL MEMBERS CUMULATIVE



DROPPED CLUBS: 20	383 CLUBS OF 700 ADDED 1 OR MORE NEW MEMBERS	<u>GENDER DISTRIBUTION</u>	
<u>DROPPED MEMBERS</u>		MALE	13,447 (73.24%)
DECEASED	308	FEMALE	4,914 (26.76%)
CLUB CANCELLED	143	TOTAL FAMILY UNIT MEMBERS	
OTHER	1,258	3,448	
TOTAL	1,709	FAMILY MEMBERS PAYING HALF DUES	
		1,779	

[CLICK HERE FOR CUMULATIVE MEMBERSHIP DATA](#)